



Testing

When you bring something new to the market, your customers will have to be confident that your product, component, material or its application performs reliably. It should work the way it is supposed to, compliant with local and international rules and regulations.

Kiwa's independent, comprehensively equipped and highly qualified testing labs and services bring that trust. When testing or evaluating, we do so strictly independently. In turn, we are also supervised. The great majority of our testing labs have been accredited by the Accreditation Council and European accreditation institutions. Thus, we close the loop, bringing trust.

Testing at kiwa

Testing, whether in a laboratory or on-site, includes examinations to independently determine characteristics and thus approve requirements in terms of safety, quality, performance, reliability and compliance. Of course, all tests are according to appropriate test regimes.



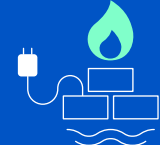
100+ labs



All over the world



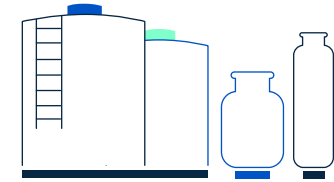
Destructive and non-destructive



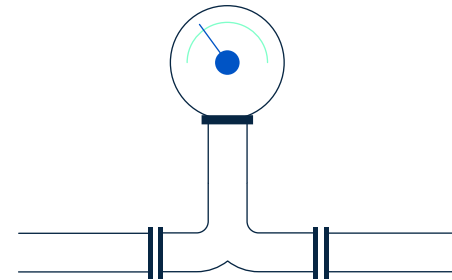
Components, materials, fluids, gases

Some examples of what we test

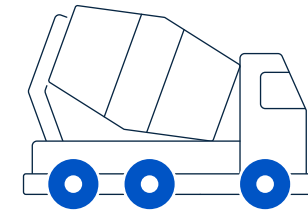
Mineral products applications and installations



Calibration, pipe surfaces, corrosion and wall thickness



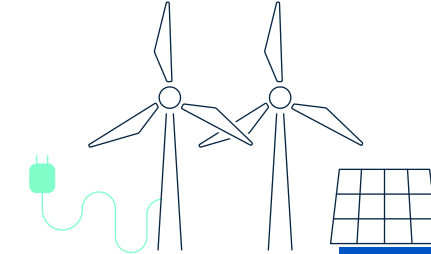
Construction materials and infrastructure



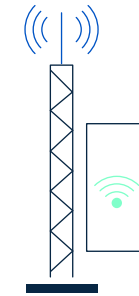
Plastics and rubber



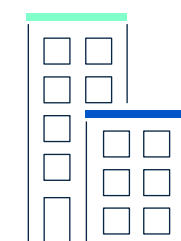
(Renewable) energy: power generation components and products



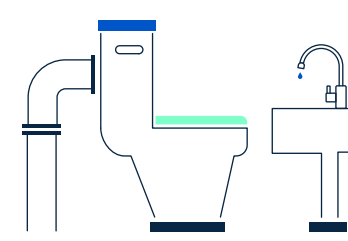
Wireless and radio equipment



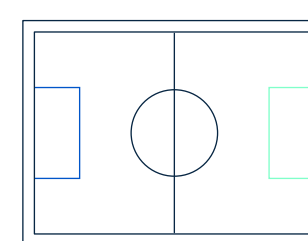
Building products, roofing and outer walls



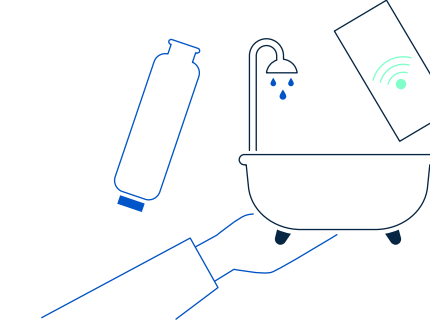
Sanitary appliances



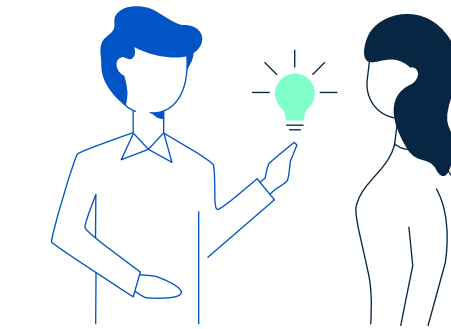
Sport surfaces



The process



You submit your product, material, or process for testing



We jointly determine a suitable testing regime



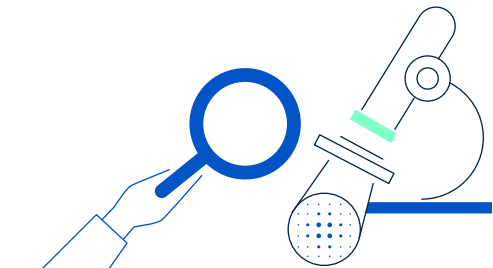
You deliver or we collect samples



You use our findings to support sales and satisfaction!



We provide a test report



We test and evaluate (in a lab or on-site) to determine characteristics

Testing



Improves efficiency



Keeps you going



Delivers proof: quality, safety, performance, and compliance



Supports commercialisation and customer satisfaction



Reduces risk